

JTAG Manager Presentation

by

Leonid Kurilan

Founder & CEO

Leonid.k@start-test.com

Phone. +972-54-6825726

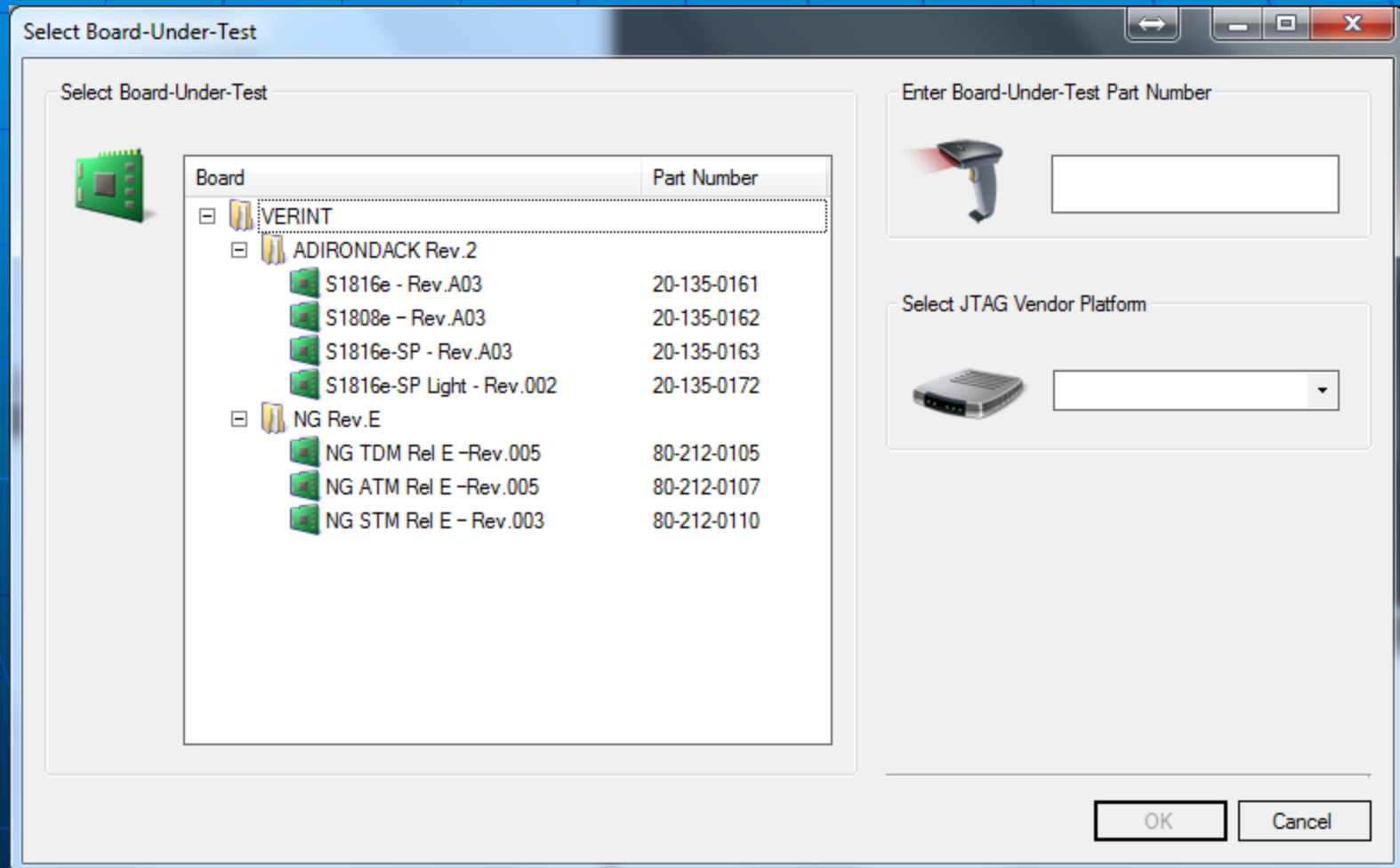
Since 2003

www.Start-Test.com

StarTest™ JTAG Manager is the PC-based operational multi-language (English, Russian) envelope that intended for implementation on the OEM electronic board manufacturing facilities, contract manufacturers and/or in the R&D labs. The **Test Fault Locator** viewer is a subset of the **JTAG Manager**.



The **JTAG Manager** has simple and friendly operator oriented GUI for board to test selection and avoids necessity to search the test sequence file placement.



JTAG Manager - [SLM-1379-V2.jtm]



The screenshot displays the 'Test Fault Locator - DEMO' software interface. The main window shows a board view with components labeled D, B, C, and A. A yellow box highlights a specific area on the board. A list of parts is displayed on the right, with 'DD6' selected. A legend indicates '100 mil' for the selected part. A detailed circuit diagram is shown on the right, with red arrows pointing from the board view to the circuit diagram. The bottom status bar indicates 'Test COMPLETED - FAILED!'.

The **JTAG Manager (Test Fault Locator)** specification table.

1. JTAG Manager (Test Fault Locator) supported Input CAD files formats

CAD formats	Acceptable CAD files names & extensions
Fabmaster Project	<NAME>.FAR, <NAME>.FAZ, <NAME>.FAT
GENCAD	<NAME>.GENCAD
Common ODB++ package	<NAME>.ZIP, <NAME>.TGZ
Agilent (HP) 3070 format	BOARD, BOARD_XY (ZIP package <NAME>.3070)

2. JTAG Manager supported JTAG systems files formats

JTAG Test Platform	Acceptable test sequences files extensions
Corelis	<NAME>.TSP. For JMAN only.
JTAG Technologies	<NAME>.SQC. For JMAN only.
FLYNN. onTAP	<NAME>.TXT. For JMAN only.

3. Optional Project files

Files purpose	Files formats
UUT Schematic draft.	<NAME>.PDF
UUT BOM.	<NAME>.CSV
UUT Test report.	<NAME>.DAT, <NAME>.TXT, <NAME>.LOG, <NAME>.CSV*,
UUT JTAG Chain	<NAME>.PDF or image JPG, PNG, BMP
User file 1*	Any of above.
User file 2*	Any of above.
User file 3*	Any of above.

* - not released in current software version

The **JTAG Manager** specification table (continue).

4. Supported UUT Test report formats.

Test systems	Files formats (names)
Teradyne Z18XX	datalog.dat.
Teradyne Spectrum (Z885X)	<NAME>.txt
Corelis	<NAME>.log
JTAG Technologies	<NAME>.txt.

5. Permanently attending windows

Window name	Attending
Test sequence	JMAN only
Test Vectors	JMAN only
Board view	JMAN & TFL
Run Log	JMAN & TFL
Diagnostic Info	JMAN only

6. Windows appearing By request

Window name	Attending
UUT Database	JMAN & TFL
Board scheme	JMAN & TFL
UUT JTAG Chain	JMAN & TFL
User file 1*	JMAN & TFL
User file 2*	JMAN & TFL
User file 3*	JMAN & TFL

* - not released in current software version

The **JTAG Manager** specification table (continue).

7. Reports

Report name	Report contents
Test Report (*.CSV, *.TXT)	Content of Run Log window. For JMAN only.
Nets Report (*.CSV)	<NET NAME>,<NET CONNECTIONS>
Part Report (*.CSV)	<PART NAME>,<PIN NUMBER>,<PIN NAME>,<NET NAME>,<NAIL NUMBER>
Nail Report (*.CSV)	<NAIL NUMBER>,<NAIL TYPE>,<NAIL SIDE>,<NET NAME>,<PART.PIN>

The **JTAG Manager** has easy and friendly GUI for creation and edition the project.

Project Properties [SLM-1379-V2.jtm]

Objects

- Marvell
 - SLM-1379-V2

Platforms

☒ Corelis
 ☐ onTAP
 ☒ JT
 ☐ Demo

Properties

Name	Value
Part Number	SLM-1379-V2
Display Name	SLM-1379-V2
Corelis Parameters	
JT Instrument	37x7
JT Instrument Type	USB
JT Parameters	
Corelis Multiboard Prefix	
JT Multiboard Suffix	

Files

Type	Path	Embedded	Update
Layout File	C:\OnTAP\Marvell\SLM-1379-V2\TFL\slm1379_r2_odbjob.tgz	Yes	No
Nails File		No	
Board Schematics	C:\OnTAP\Marvell\SLM-1379-V2\TFL\DB-XC3-24G4XG-REV2_...	Yes	No
JTAG Chains	C:\OnTAP\Marvell\SLM-1379-V2\Chain\DB-XCAT3-24GE_JTAG...	Yes	No
BOM File	C:\JTAG\Marvell\BOM\DB-XC3-24GE-6SFP+Rev 2.0 (ASSY000...	Yes	No
Log File		No	
Corelis Project	C:\OnTAP\Marvell\SLM-1379-V2\Corelis\SLM-1379-V2.tsp	No	
JT Project	C:\JTAG\Marvell\Sequences\slm-1379-v2.sqc	No	

OK Cancel

The **JTAG Manager** creates test report and allows to save it in CSV file,

Test Results - Detailed Log - Created by JTAG Manager

Tuesday, May 06, 2014 9:52 AM
Board-Under-Test: PCB152
Serial Number: 0001

Test Step	Result
Test - cpld_infra - infra	Skipped
Sys - pcb152_cpld_erase	Skipped
Sys - cpld_u35_prog	Skipped
Test - infra_with_pcb137 - infra	Passed
Test - inter_with_pcb137	Failed

Test Failed

Name: Test - infra_with_pcb137 - infra
Time: 9:52:45 AM

! BRC Version 1.6.1.6 - 20130903 Win32
SYNTAX_VERSION 1.3
DESIGN pcb137
TEST INFRA

INPUT_FILES
GEN_FILE "Infra_with_pcb137.gen"
APL_FILE NONE
CNN_FILE "infra.cnn"
END_INPUT_FILES

ERRORS 0
END_ERRORS

Name: Test - inter_with_pcb137
Time: 9:52:47 AM

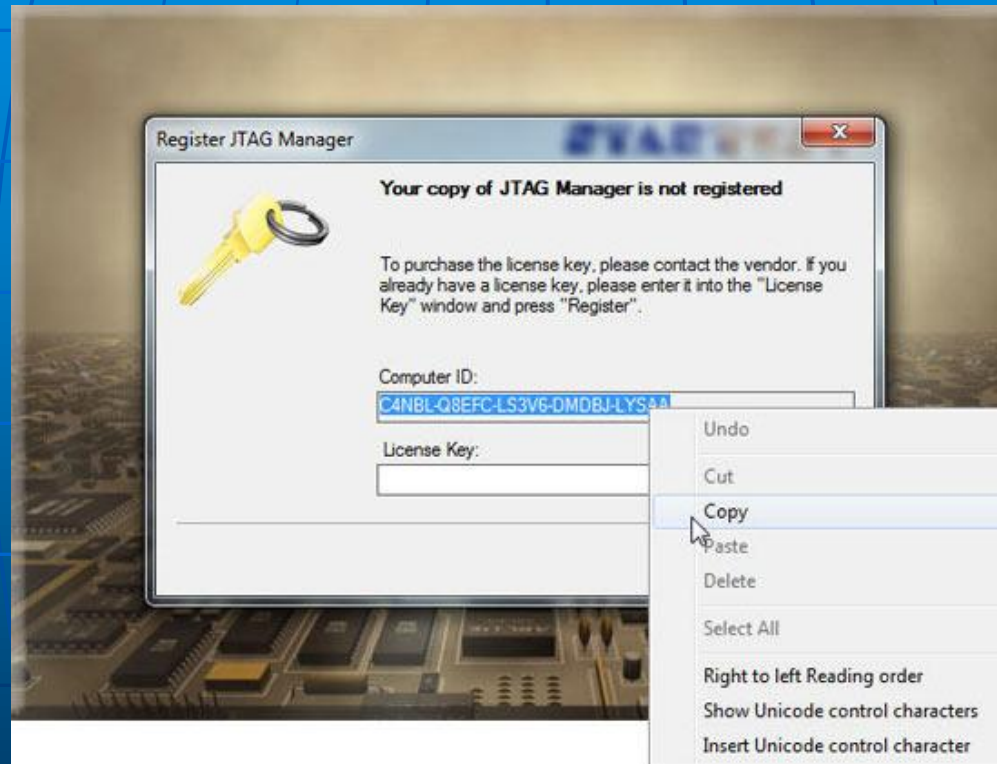
Check tool authorization
Start diagnostics

Or to save it in TXT or CSV formats for further processing.

The screenshot displays the JTAGManager software interface. The 'Reports' menu is open, showing options like 'View Test Report', 'Save Test Report (Text)', 'Save Test Report (CSV)', 'Save Nets Report (CSV)', 'Save Parts Report (CSV)', 'Save ICT Nails Report (CSV)', 'Save Report After Run', and 'Set Reports Folder...'. The 'Save Report After Run' option is highlighted. In the background, the 'Test Vectors' list shows results for various tests, with test 15 'Flash - flash_u36_prog - verify' marked as 'FAILED'. The 'Board View (Component Side)' shows a detailed circuit board layout with components labeled U8 and P4. A dialog box in the foreground prompts for the 'Enter Board-Under-Test Serial Number:' with the value '0001' entered.

Test Vector	Result
10 Test - logic_u13	PASSED
11 Test - spi_rtc_u21_thru_u20_u22	PASSED
12 Test - osc_u33	PASSED
13 Test - flash_u36_test - bustest	PASSED
14 Image - flash_u36_prog - <image>	PASSED
15 Flash - flash_u36_prog - verify	FAILED
16 Ctrl - flash_u36_prog - IF	Skipped
17 Flash - flash_u36_prog - write	
18 Flash - flash_u36_prog - verify	
19 Ctrl - flash_u36_prog - ELSE	
20 Ctrl - flash_u36_prog - ENDIF	
21 Test - flash_u26_test - rd_id	

The fully functional 30-days evaluation version is accessible. The license for 30-days evaluation version will be sent to user after receiving the Computer Hardware ID, obtained by first start the software after it's installation on the user's computer.



Copy data from Computer ID line and send to info@start-test.com with the subject: **JMAN 30 days evaluation**. The License Key will be sent to you shortly. Download fully operated 30-days evaluation version now from: <ftp://jmandev@ftp.start-test.com> Password: JmanDev

<http://www.start-test.com/Products/JTAGManager.php>

**Thank you
for your patience.**